



GMT MONTHLY MEMBERSHIP PROGRESS REPORT

Results as of: 5/31/2017

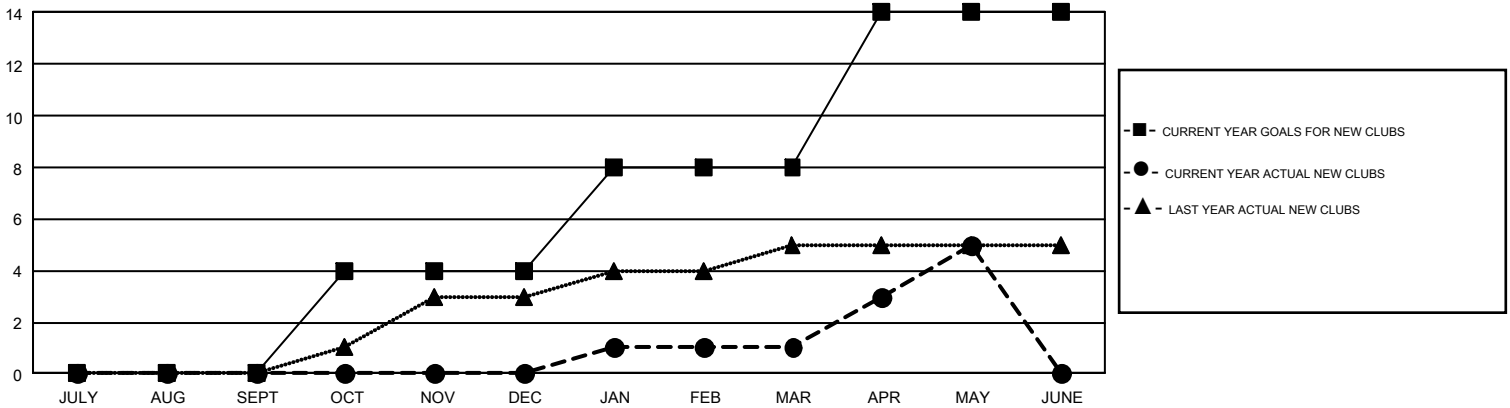
GMT Constitutional Area 2, Group A

GMT: DENNIS STEVENSON

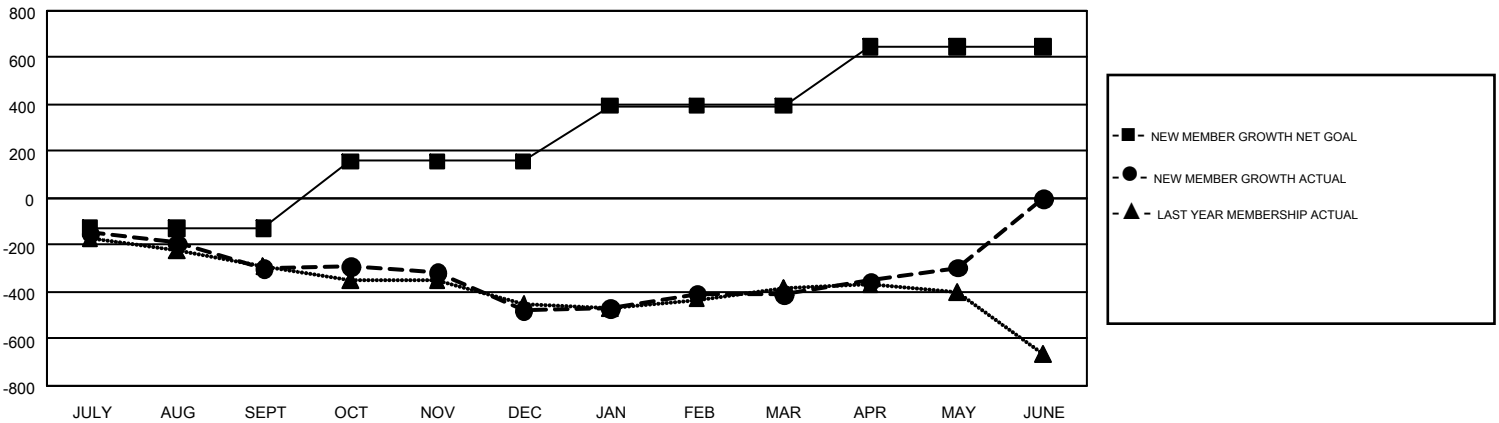
REPORT DOES NOT INCLUDE CLUBS IN UNDISTRICTED AREAS.

Clubs				Members			
RESULTS FOR 2016-2017				RESULTS FOR 2016-2017			
QUARTER	NEW CLUB GOAL	NEW CLUBS	DROPPED CLUBS	QUARTER	NEW MEMBER GROWTH NET GOAL (not reinstated or transfers)	NEW MEMBER GROWTH ACTUAL (not reinstated or transfers)	DROPPED MEMBERS ACTUAL (including transfers)
JULY/AUG/SEPT	0	0	6	JULY/AUG/SEPT	-130	221	520
OCT/NOV/DEC	4	0	5	OCT/NOV/DEC	287	426	606
JAN/FEB/MAR	4	1	2	JAN/FEB/MAR	236	478	410
APR/MAY/JUNE	6	4	1	APR/MAY/JUNE	254	355	240

GOALS AND ACTUAL NEW CLUBS CUMULATIVE



GOALS AND ACTUAL MEMBERS CUMULATIVE



DROPPED CLUBS: 14	439 CLUBS OF 715 ADDED 1 OR MORE NEW MEMBERS	GENDER DISTRIBUTION MALE 11,498 (68.17%) FEMALE 5,368 (31.83%)
DROPPED MEMBERS DECEASED 217 CLUB CANCELLED 130 OTHER 1,429 TOTAL 1,776	CLICK HERE FOR CUMULATIVE MEMBERSHIP DATA	TOTAL FAMILY UNIT MEMBERS 3,093 FAMILY MEMBERS PAYING HALF DUES 1,576